

Roosecote
Biomass Power Station

Barrow in Furness,
Cumbria

Centrica Energy



Introduction:

- The Centrica team

- Mr Tony Jarvis, Centrica Energy, Project Director
- Mr Mark Manley, Centrica Energy, Project Manager
- Mr Ian Jeffcoat, Poyry, Technical Project Director
- Miss Helen Moon, Poyry, Project Manager
- Mr Christopher LeCointe, RPS, Planning & Consent
- Dr Keith Jones, RPS, Environmental Statement
- Guy Bailey, RPS, Consultation Manager
- Jon Pullen, RPS, Air Quality & Health

- Relevant Planning Authorities

- Mr Jason Hipkiss, Barrow Borough Council ('host')
- Mr Iain Fairlamb, Cumbria County ('host')

Introduction
and
Purpose

Purpose:

To describe and discuss:

- Description of Project – key elements and recent changes
- Programme and Process
- The Likely Environmental Effects
- Requirements

Introduction
and
Purpose

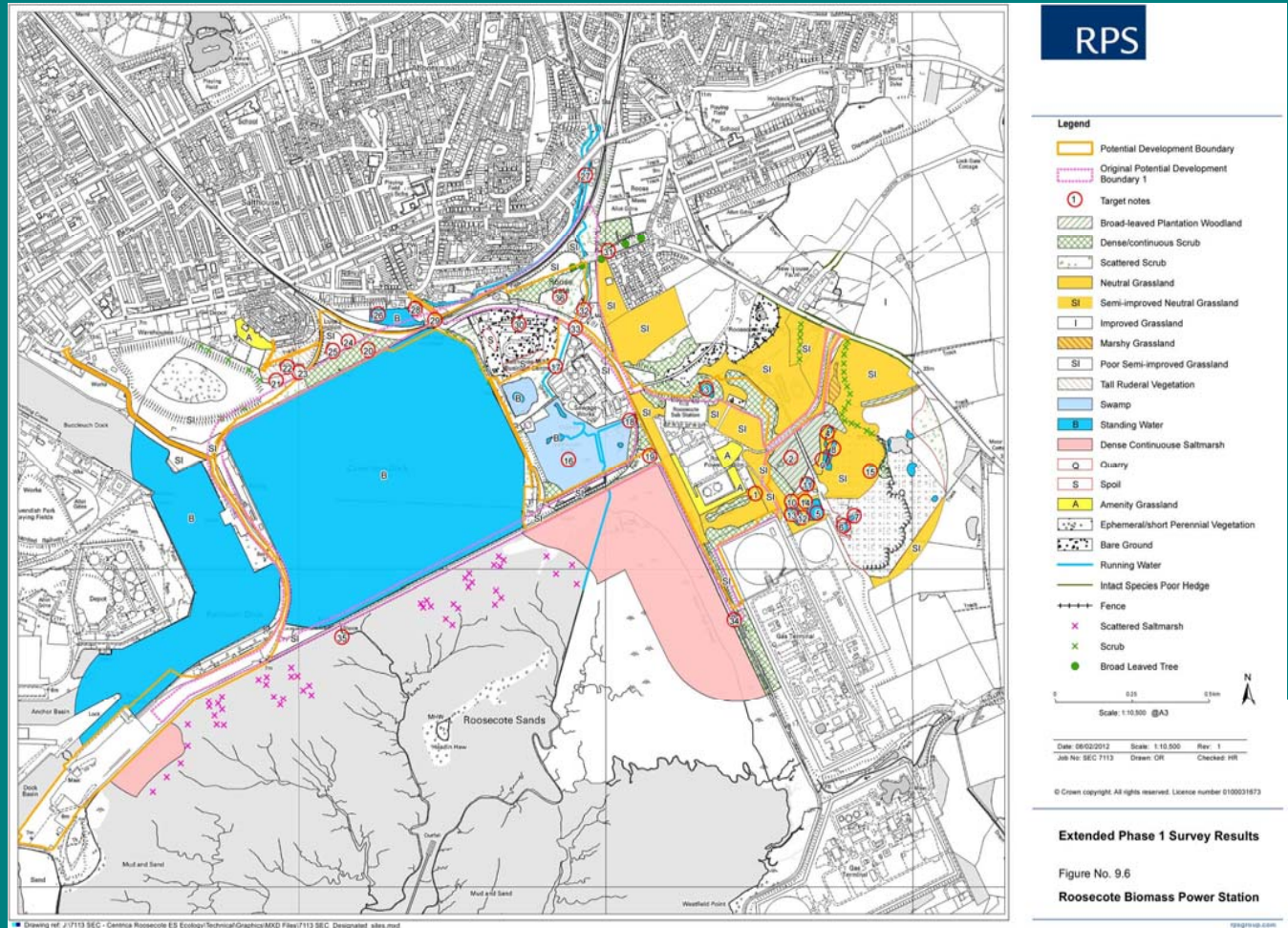
The Project

Project Description:

- The Power Station
 - Up to 80MWe
 - CHP ready
- The Port Infrastructure
 - new berth
 - new unloading facilities
- The Fuel
 - up to 600,000tpa
 - biomass (virgin and recycled)
- Fuel delivery options, and preferred solution
 - Sea, conveyor, rail and road
- DCO boundary

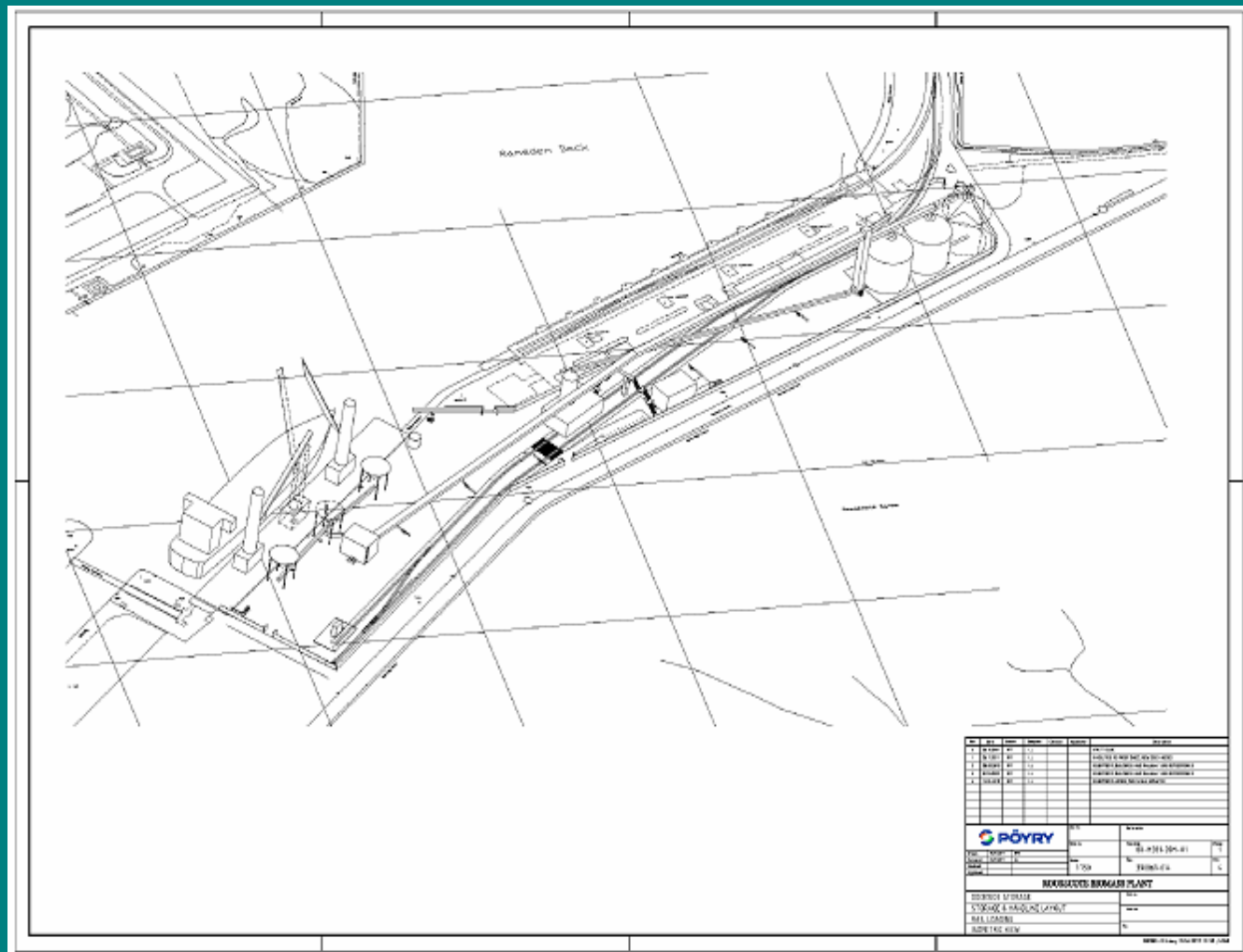
DCO boundary







Port Layout



Aerial
view



Programme and Process:

- SoCC February 2012
- Consultation Nov '11 – March '12
- Application Submission end May 2012
- Acceptance end June 2012
 - 28 days to accept
- Pre-Examination July to Sept inc
 - Register an interest
 - Preliminary Meeting
- Examination Oct to March '13
 - 6 months to examine
 - views in writing or open floor hearings
- Decision April – June 2013
 - NPS's
 - 3 months for NID
 - 3 months for SofS
- DCO Award July – Sept 2013
- September 2013

Programme

Environmental Effects

The application for a DCO will be accompanied by an Environmental Statement. This will identify and assess the main environmental effects of the project.

Some of the main issues are likely to include the following:

- Visual
- Ecology
- Traffic and transport
- Air Quality / health

PEI and
Likely
Environmental
Effects

Visual Effects

- Responses to PEI
 - detailed methodology
 - study area
 - viewpoints
- Visual Impact issues
 - Scale of boiler building and stack
- Mitigation

PEI and
Likely
Environmental
Effects

Ecology Effects

- Ecology Issues
 - International sites and SSSI's
 - County Wildlife Sites
 - Protected Species
 - Otters
 - Badgers
 - Reptiles
 - Bats
 - Ornithology
 - Invertebrates
- Public comment and other responses to PEI
- Avoidance and Mitigation

PEI and
Likely
Environmental
Effects

Transport Effects

- Highway Authority
- Public comment and other responses to PEI
- Transport Issues
- Mitigation

PEI and
Likely
Environmental
Effects

Air Quality Effects

- Public comment and other responses to PEI
- Air Quality issues
 - Traffic, dust, residual emissions to air
 - Health effects?
 - Modelling
 - HHRA & HIA
 - Independent Control and the EA
- Decision making

4.4 "the planning and pollution control systems are separate, but complementary. In considering an application for development consent, the IPC should focus on whether the development itself is an acceptable use of the land, and on the impacts of that use, rather than the control of processes, emissions or discharges themselves. The IPC should work on the assumption that the relevant pollution control regime and other environmental regulatory regimes will be properly applied and enforced by the relevant regulator. It should act to complement but not seek to duplicate them (ibid, s4.10)."

PEI and
Likely
Environmental
Effects

Requirements:

- Conditions including:
 - Design and Layout
 - Ecology mitigation/enhancement
 - Landscape
 - Noise
 - Hours of Operation
- CEMP
- Site Waste Management Plan
- Travel Plan

Control

Other Issues

- Consultation
- Permitting & monitoring
- Centrica and Barrow-in-Furness
- The Future

PEI and
Likely
Environmental
Effects